



THE UNIVERSITY OF
SYDNEY
—
Institute of
Agriculture

DRF 2022 SYMPOSIUM

UNLOCKING POTENTIAL

FORSTER, NSW

Venue

Club Forster, 19 Strand Street
Forster NSW

Tuesday 19 July

Symposium
Symposium Dinner

Wednesday 20 July

Farm Day
Emerging Scientists Program

dairy-foundation.sydney.edu.au

**Early Bird Prices
Available Until
30th June**



SCAN FOR TICKETS

OR [CLICK HERE](#)

Proudly sponsored by:



DRF 2022 SYMPOSIUM



Unlocking the Potential of our industry!



WELCOME TO THE 2022 DAIRY RESEARCH FOUNDATION SYMPOSIUM

UNLOCKING POTENTIAL

In line with our new collaborative program Dairy UP, this year we focus on Unlocking the Potential of our dairy industry! And finally back face to face..!

Come along for an amazing program including:

- **Better milk and dairy beef markets**

Dairy and beef farmers are largely price takers... as such, there is little they can do to change that reality... or is it..? A new range of market options such as **future markets and supply-chain agreements**, commonly used in other industries, are now becoming available for dairy and beef products. We bring experts to explain what is in there for the Australian dairy farmers...

- **Managing people and climatic adversity to de-risk dairying**

We tackle big risks for the dairy industry: skilled farm **labour** and **climatic adversity**; hearing first hand from the young, skilled people currently working in the dairy industry; and a renown consultant and a panel of farmers directly affected by climatic calamities who have come up successfully at the other end... unmissable..!

- **Lifting productivity and profitability through farm intensification**

This session focusses on **Intensification**, without doubt one of the hottest topic in the Australian dairy industry today! We bring together Dairy UP researchers and farmers who have taken -or are taking- the path of intensification to understand the real pros and cons, and costs of intensification, as well as the potential room for improvement in the future!

And on Farm Day: 3 fantastic stations at **Manning Valley Dairy**, Taree focusing on:

- **Dairy UP's "unlocking the potential of Kikuyu based pastures**

The Dairy UP team and project partner-farmer explains how this new research can help lift productivity and profitability of pasture-based farms!

- **The nitty-gritty of going intensive**

Thinking of intensifying? Hear all the details directly from MDV Manager Simon Scowen!

- **The Manning Valley Wagyu system**

What are the keys for a successful mix of dairy and beef enterprise?

Plus our flag ship: what are the youngest and brightest investigating on? Eight emerging scientists across the three stations!

A truly unique program! Don't miss it...!



Professor Yani Garcia
Chair of the 2022
DRF Symposium
Organising Committee



THE UNIVERSITY OF
SYDNEY

The Dairy Research Foundation's 2022 SYMPOSIUM



THE SYMPOSIUM AT A GLANCE

19/7

Tuesday 19 July

10:00am—4:45pm

**Dairy Research Foundation
Symposium**

Venue:

Club Forster, Forster NSW

6:30pm—10.30pm

**Dairy Research Foundation
Symposium Dinner**

Venue:

Club Forster, Forster NSW

20/7

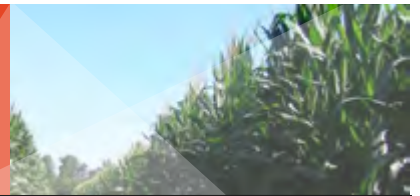
Wednesday 20 July

8:30am—1:30pm

**Farm Day, incorporating the
Emerging Scientists Program**

Venue:

*Manning Valley Dairy, 400
Bungay Road Winghin NSW*



KEY SPEAKERS

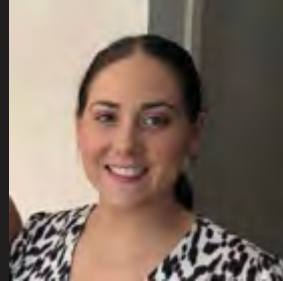
[CLICK HERE
FOR BIOGRAPHIES](#)



April Browne



Cameron Clark



Chloe Wilson



Colin Thompson



Simon, Darlene & Ben Scowan



Elizabeth Holroyd



Ian Lean



Jane Sherborne



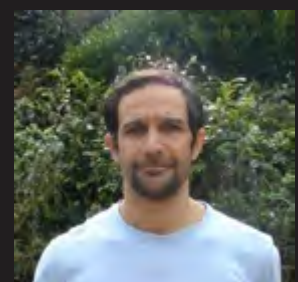
Josh Hack



Karen Romano



Maddison Peace



Martin Correa Luna



Neil Moss



Niall Blair



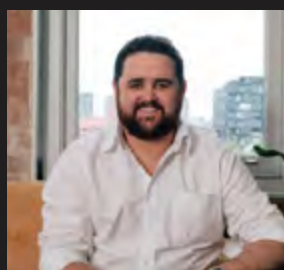
Sam Nicholson



Scott Briggs



Sheena Carter



Tim Jude



Trevor Middlebrook



Yani Garcia

PROGRAM

Tuesday 19 July
Symposium Day

19/7

9:15am

REGISTRATION AND MORNING TEA

10:00am

Welcome to the DRF Symposium

Jane Sherborne, Dairy Farmer, DRF President

Hon Niall Blair, Chair Dairy UP

Yani Garcia, Director Dairy Research Foundation, Dairy UP Program Leader

10:30am - 12noon

SESSION 1: Investigating dairy productivity and profitability through farm intensification

10:30am

What do farm economic figures show?
Insights learnings and key messages from Dairy UP's project P3 (The economics of intensification)

Sheena Carter, Dairy UP P3 Co-Lead, NSW DPI - Dairy Development Officer

10:50am

Yesterday, today, tomorrow
An interactive panel with farmers who have done it, are doing it or plan to intensify

Colin Thompson, Dairy farmer, Cowra, Chair NSW Farmers DC
Simon Scowen, Manager, Manning Valley Dairy, Taree

Karen Romano Dairy UP P3 Co-Lead, Feeding and Farm Systems, Dairy Australia

11:30am

Lifting cow productivity in intensive systems

Ian Lean, MD Scibus, Dairy UP P2 Lead

12:00noon - 1pm

LUNCH

1:00pm - 2:30pm

SESSION 2: Managing people and climatic adversity to de-risk dairying

1.00pm

Getting and retaining the right people — the Achilles' heel of the dairy industry
April Brown facilitates a panel of young and motivated graduates working in the dairy industry

April Browne, **April Browne**, Lead, Learning and Development Partners, Dairy Australia

Andy Gray

Lachie Davis

Maddie Pearce, PhD Candidate University of Sydney

1:45pm

Bouncing Back Stronger
How do some dairy farmers manage to not just overcome but even grow after extreme climate adversity? - A dynamic/interactive panel.

Neil Moss, Director Scibus

Trevor Middlebrook, Dairy Farmer Taree

Elizabeth Holroyd, RAMHP Coordinator, Local Rural Adversity Mental Health Team

Sam Nicholson, Dairy Farmer, Taree

2:30pm

BREAK

3:15pm - 4:45pm

SESSION 3: Better milk and dairy beef markets

3:15pm

Introduction

Cameron Clark, Associate Professor of Livestock Production and Welfare, University of Sydney

3:20pm

A deep insight into calf supply chains and price and other limitation from the eyes of the developer of Heiferlink

Cameron Renshaw, General Manager, Calflink

3:50pm

Budgeting for male calves: Decreasing price volatility and risk by hedging beef price

Tim Jude, Livestock and Commodities Broker, StoneX

4:20pm

The Australian Milk Price Initiative: Milk price transparency and risk management

Scott Briggs, Bridgecape Commodities

6:30pm - 10:30pm

Dairy Research Foundation Symposium Dinner
Dairy Science Award and Introduction to our Emerging Scientists

Club Forster, Forster

PROGRAM

Wednesday 20 July

Farm Day and Emerging Scientists Program

20/7



8.00am	DEPARTURE CLUB FORSTER	
8.30am	Welcome and introduction to Manning Valley Dairy	Simon Scowen , Manager, Manning Valley Dairy, Taree
9.00am - 12.30pm	Rotate through the following platforms with a break for morning tea	
	STATION 1: Managing pasture and feeding remotely	Martin Correa Luna , Dairy UP Research Fellow, University of Sydney Josh Hack , Agronomist, Ag Farming Systems Chloe Wilson , Technical Officer, University of Sydney Sam Nicholson , Dairy Farmer Taree
	Emerging Scientists	
	How are carbon dioxide and methane fluxes mediated by grazing in Kikuyu pastures?	Milad Begheri Shirvan , University of Sydney
	Exploring greenhouse gas mitigation strategies and carbon neutrality in dairy farms of Uruguay: A case study approach	Francisco Segundo , University of Sydney
	STATION 2: "The nitty gritty of system intensification"	Simon Scowen , Manager Manning Valley Dairy, Taree
	Emerging Scientists	
	Effect of Antimicrobial Treatment on the Dynamics of Ceftiofur Resistance in Enterobacteriaceae from Adult Dairy Cows.	David Sheedy , University of Sydney
	Factors characterising profitable dairy farms in Australia.	Juan Gargiulo , NSW DPI
	Environmental enrichment preferences of cattle grazing at pasture.	Emily Dickson , CSIRO/UNE
	STATION 3: The Manning Valley Wagyu Dairy Beef System	Darlene Scowen & Ben Scowen , Dairy Farmers Manning Valley Dairy
	Emerging Scientists	
	Feedlot cattle: First at feed, first in gain	Sarah Mac , University of Sydney
	Unlocking the potential of dairy calves using data from automated calf feeders	Sarah Legge , The University of Sydney
	The productivity of cows and calves in pasture-based extended suckling	Sandra Ospina-Rios , Tasmanian Institute of Agriculture (TIA), University of Tasmania
12.30pm -1.30pm (Finish 1.30pm)	LUNCH, EMERGING SCIENTISTS PRIZES AND SYMPOSIUM CLOSING	



EMERGING SCIENTISTS

The Dairy Research Foundation is pleased to showcase the research and talent of Australia's emerging dairy scientists at the 2022 Symposium. Their presentations are key to Day 2 of our program and they have all been allocated to one of three platforms on the farm. Each scientist will have five minutes to deliver their presentation followed by some time for questions and discussions.

The intent behind this encounter is to offer an opportunity for professional development for these emerging scientists. The program is in the form of a competition, where we ask you, the audience, to assess the quality, relevance and interest of each presentation – with the audience scores combined to determine a winner. This is announced at the conclusion of the Farm Day. We encourage your full participation to support our next generation of dairy scientists.



Emerging Scientists 2018



EMERGING SCIENTISTS 2022

[CLICK HERE FOR BIOGRAPHIES](#)

Station 1



Milad Bagheri Shirvan

How are carbon dioxide and methane fluxes mediated by grazing in Kikuyu pastures?



Francisco Segundo

Exploring greenhouse gas mitigation strategies and carbon neutrality in dairy farms of Uruguay: A case study approach

Station 2



David Sheedy

Effect of Antimicrobial Treatment on the Dynamics of Ceftiofur Resistance in Enterobacteriaceae from Adult Dairy Cows.



Juan Gargiulo

Factors characterising profitable dairy farms in Australia.



Emily Dickson

Environmental enrichment preferences of cattle grazing at pasture.

Station 3



Sarah Mac

The impact of weaning on rumination, calf weight, and dry feed intake.



Sarah Legge

Unlocking the potential of dairy calves using data from automated calf feeders.



Sandra Ospina-Rios

The productivity of cows and calves in pasture-based extended suckling,



ORGANISING COMMITTEE



Cameron Clark
University of Sydney



Dimity Smith
Gro Events Group



Elizabeth Argue
Gro Events Group



Emily Neilson



Helen Golder
Scibus



Kirsty Jaensch
University of Sydney



Lee-Ann Monks
Monks Communication



Nico Lyons
NSW DPI



Peter Beale
Local Land Services -
Hunter



Sabrina Lomax
University of Sydney



Simon Scowen
Manning Valley Dairy



Yani Garcia
University of Sydney

Unlocking Potential



Venues

Symposium Venue

Club Forster:

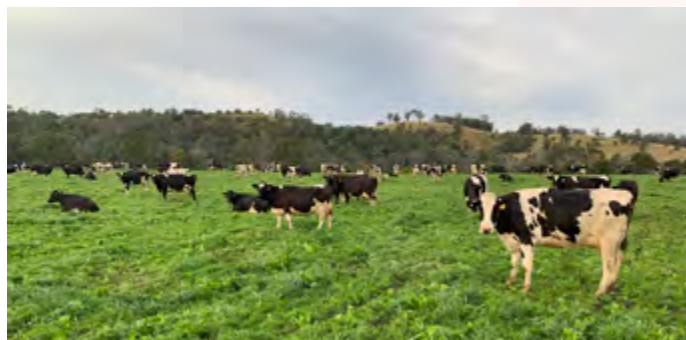
19 Strand Street, Forster NSW 2428



Farm Day Venue

Manning Valley Dairy

400 Bungay Road, Winham NSW 2429



Symposium Dinner 6.30pm to 10.30pm – Club Forster

Enjoy dinner and drinks while mingling with the area's dairy farmers and industry leaders.

Smart Casual Theme - with a touch of black and white.

Ticket includes - three course meal, beer and wine.

Please include your dietary requirements in the ticket purchase.

Getting to Forster

Forster is a coastal town situated in the Mid North Coast region of New South Wales.

Forster is a 2 hour drive from Newcastle and a 3.5 hour drive North of Sydney.



Where to stay in Forster

We can recommend the following accommodation if you're staying in Forster. Being a holiday destination there are also a lot of individual apartments on Booking.com and on AirBnB, so we recommend you look into these also.

The Dorsal Boutique Hotel

1 West Street, Forster T: +61 2 6554 8766

www.dorsalhotel.com.au

Forster Holiday Apartment

302/21-25 Wallis Street Forster

www.booking.com

Astina Suites

7-9 Beach Street, Forster T: +61 2 4731 1777

www.astinasuites.com.au



Conference Pricing

We are pleased to offer an early bird discount to those booking and paying by Thursday 30 June 2022.
We are also pleased to offer significant discounts to farmers and students attending.

Early bird prices - Payment by 30 June 2022

Farmers/Students - NSW Dairy Industry Forum and Symposium Day, Farm Day and Dinner	\$370.00
Service providers - NSW Dairy Industry Forum and Symposium Day, Farm Day and Dinner	\$480.00

Not so early bird prices - Payment after 30 June 2022

Farmers/Students - NSW Dairy Industry Forum and Symposium Day, Farm Day and Dinner	\$470.00
Service providers - NSW Dairy Industry Forum and Symposium Day, Farm Day and Dinner	\$580.00
Single day 1 ticket (NSW Dairy Industry Forum and Symposium Day OR Farm Day - not including dinner)	\$210.00
Single day 2 ticket (NSW Dairy Industry Forum and Symposium Day OR Farm Day - not including dinner)	\$160.00

Symposium Dinner

6:30pm Wednesday 20 July 2022	\$140.00
-------------------------------	----------

To secure your early bird pricing, payment must be received by the 30 June 2022 cut-off.

How can I register?

1. Scan the QR code to go to the Registration page. or
2. Go to <https://drfsymposium2022.eventbrite.com.au> and click on the registration button and complete your details and payment electronically.

3.

OR CLICK HERE



Unlocking Potential



The Dairy Research Foundation's 2022 Symposium is proudly supported by





THE UNIVERSITY OF
SYDNEY
—
**Institute of
Agriculture**



dairy-foundation.sydney.edu.au