



THE UNIVERSITY OF  
**SYDNEY**  
—  
Institute of  
Agriculture

# DAIRY RESEARCH FOUNDATION 2022 SYMPOSIUM

UNLOCKING POTENTIAL

**FORSTER, NSW**

## Venue

Club Forster, 19 Strand Street  
Forster NSW

## Tuesday 15 November

Symposium  
Symposium Dinner

## Wednesday 16 November

Farm Day – Manning Valley Dairy, Wingham  
Emerging Scientists Program

[dairy-foundation.sydney.edu.au](http://dairy-foundation.sydney.edu.au)

**Early Bird Prices  
Available Until  
30th September**



SCAN FOR TICKETS

OR **CLICK HERE**

**Proudly sponsored by:**



# DRF 2022 SYMPOSIUM



Unlocking the Potential of our industry!



# WELCOME TO THE 2022 DAIRY RESEARCH FOUNDATION SYMPOSIUM

## UNLOCKING POTENTIAL

In line with our new collaborative program Dairy UP, this year we focus on Unlocking the Potential of our dairy industry! And finally back face to face..!

**Come along for an amazing program including:**

- **Better milk and dairy beef markets**

Dairy and beef farmers are largely price takers. As such, there is little they can do to change that reality. Or is there? A new range of market options such as **future markets and supply-chain agreements**, commonly used in other industries, are now becoming available for dairy and beef products. We bring experts to explain what is in it for the Australian dairy farmers.

- **Managing people and climatic adversity to de-risk dairying**

We tackle big risks for the dairy industry: skilled farm **labour** and **climatic adversity**; hearing firsthand from the young, skilled people currently working in the dairy industry; and a renowned consultant and a panel of farmers directly affected by climatic calamities who have come up successfully at the other end. An unmissable session.

- **Lifting productivity and profitability through farm intensification**

This session focusses on **Intensification**, without doubt one of the hottest topics in the Australian dairy industry today! We bring directly from USA Courtney Hallbach, a top expert in Free-Stall and Compost barn design with cow comfort and farm profitability as key goals. Courtney comes from the University of Wisconsin and will join, in person, Dairy UP researchers and farmers who have taken -or are taking- the path of intensification to understand the real pros and cons, and costs of intensification!

And on Farm Day: 3 fantastic stations at **Manning Valley Dairy**, Wingham focusing on:

- **Dairy UP's "unlocking the potential of Kikuyu based pastures"**

The Dairy UP team and project partner-farmer explains how this new research can help lift productivity and profitability of pasture-based farms!

- **The nitty-gritty of going intensive**

Thinking of intensifying? Hear all the details directly from MDV Manager Simon Scowen!

- **The Manning Valley Wagyu system**

What are the keys for a successful mix of dairy and beef enterprise?

Plus our flag ship: what are the youngest and brightest investigating? Nine emerging scientists across the three stations!

**A truly unique program! Don't miss it...!**



**Professor Yani Garcia**  
Chair of the 2022  
DRF Symposium  
Organising Committee



THE UNIVERSITY OF  
**SYDNEY**

## The Dairy Research Foundation's 2022 SYMPOSIUM



# THE SYMPOSIUM AT A GLANCE

# 15/11

**Tuesday 15 November**

**8:30am - 4:45pm**

**Dairy Research Foundation  
Symposium**

*Venue:*

*Club Forster, Forster NSW*

**6:30pm - 10.30pm**

**Dairy Research Foundation  
Symposium Dinner**

*Venue:*

*Club Forster, Forster NSW*

# 16/11

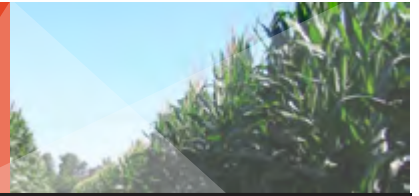
**Wednesday 16 November**

**8:30am - 1:30pm**

**Farm Day, incorporating the  
Emerging Scientists Program**

*Venue:*

*Manning Valley Dairy, 400  
Bungay Road Wingham NSW*



## KEY SPEAKERS

[CLICK HERE  
FOR BIOS](#)



**April Browne**



**Ben, Darlene & Simon Scowan**



**Cameron Clark**



**Chloe Wilson**



**Colin Thompson**



**Courtney Halbach**



**Ian Lean**



**Jane Sherborne**



**Josh Hack**



**Karen Romano**



**Maddison Peace**



**Martin Correa Luna**



**Neil Moss**



**Niall Blair**



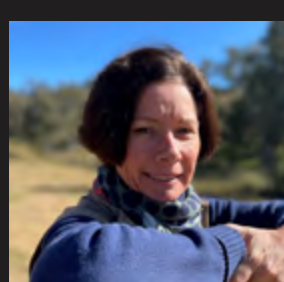
**Orry Berry**



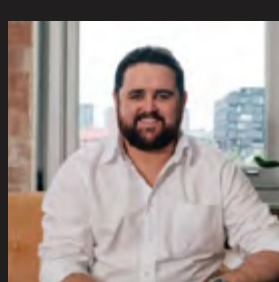
**Sam Nicholson**



**Scott Briggs**



**Sheena Carter**



**Tim Jude**



**Trevor Middlebrook**

# PROGRAM

Tuesday 15 November  
**Symposium Day**

15/11



**From 8.30am REGISTRATION, TEA/COFFEE AND LIGHT REFRESHMENTS - (sponsored by Local Land Service)**

**9:30am Welcome to the DRF Symposium**

**Jane Sherborne**, Dairy Farmer, DRF President  
**Hon Niall Blair**, Chair Dairy UP  
**John Penry**, Manager Technical and Innovation, Dairy Australia

**9:45am - 12noon SESSION 1: Investigating dairy productivity and profitability through farm intensification**

9:45am Happy housing, happy cows

**Courtney Halbach**, The Dairyland Initiative – University of Wisconsin, Madison

10:30am Lifting cow productivity in intensive systems

**Ian Lean**, MD Scibus, Dairy UP P2 Lead

10:50am What do farm economic figures show?  
Insights learnings and key messages from Dairy UP's project P3 (The economics of intensification)

**Sheena Carter**, Dairy UP P3 Co-Lead, NSW DPI - Dairy Development Officer

11:10am Intensification: Yesterday, today, tomorrow  
An interactive panel with farmers who have done it, are doing it or plan to intensify

**Colin Thompson**, Dairy farmer, Cowra, Chair NSW Farmers DC

**Simon Scowen**, Manager, Manning Valley Dairy, Wingham

**Karen Romano** Dairy UP P3 Co-Lead, Feeding and Farm Systems, Dairy Australia

**12:00noon – 1.15pm LUNCH - (sponsored by ProviCo Rural)**

**1:15pm - 2:45pm SESSION 2: Managing people and climatic adversity to de-risk dairying**

1.15pm Getting and retaining the right people — the Achilles' heel of the dairy industry  
April Brown facilitates a panel of young and motivated graduates working in the dairy industry

**April Browne**, Lead, Learning and Development Partners, Dairy Australia

**Andy Gray**, Graduate Dairy Assistant, Aurora Dairies

**Lachie Davis**, Manager Lilydale Dairy Farms

**Maddie Pearce**, PhD Candidate University of Sydney

**Georgia Sherborne**, Dairy Farmer, Willow Vale

2:05pm Bouncing Back:  
How do some dairy farmers and farm managers not just overcome adversity, but grow after extreme climate adversity? – A dynamic and interactive panel.

**Neil Moss**, Director Scibus

**Trevor Middlebrook**, Dairy Farmer, Taree

**Orry Berry**, RAMHP Coordinator, Local Rural Adversity Mental Health Team

**Sam Nicholson**, Dairy Farmer, Taree

**2:45pm - 3.45pm BREAK**

**3:45pm - 5:00pm SESSION 3: Better milk and dairy beef markets - (sponsored by Drury's Stockfeeds)**

3:45pm Introduction

**Cameron Clark**, Associate Professor of Livestock Production and Welfare, University of Sydney

4:00pm The calf supply chain: From potholes to a smooth ride

**Cameron Renshaw**

4:30pm Budgeting for male calves: Decreasing price volatility and risk by hedging beef price

**Tim Jude**, Livestock and Commodities Broker, StoneX

**6:30pm - 10.30pm Dairy Research Foundation Symposium Dinner**  
Dairy Science Award and Introduction to our Emerging Scientists

Club Forster, Forster

# PROGRAM

Wednesday 16 November

## Farm Day and Emerging Scientists Program

16/11



**8.30am** Welcome and introduction to Manning Valley Dairy

**Simon Scowen**, Manager, Manning Valley Dairy, Wingham

**9.00am - 12.30pm** Rotate through the following platforms with a break for morning tea - (morning tea sponsored by Dairy News)

### STATION 1: Managing pasture and feeding remotely

**Martin Correa Luna**, Dairy UP Research Fellow, University of Sydney

**Josh Hack**, Agronomist, Ag Farming Systems

**Chloe Wilson**, Technical Officer, University of Sydney

**Pat Neale**, Dairy Farmer Oxley Island

**Alan Hooke**, Farm Manager

#### Emerging Scientists

How are carbon dioxide and methane fluxes mediated by grazing in Kikuyu pastures?

**Milad Begheri Shirvan**, University of Sydney

Exploring greenhouse gas mitigation strategies and carbon neutrality in dairy farms of Uruguay: A case study approach

**Francisco Segundo**, University of Sydney

Future proofing dairy businesses against climate risk

**Zita Ritchie**, NSW DPI

### STATION 2: "The nitty gritty of system intensification"

**Simon Scowen**, Manager Manning Valley Dairy, Wingham

**Courtney Halbach**, The Dairyland Initiative – University of Wisconsin, Madison

#### Emerging Scientists

Effect of Antimicrobial Treatment on the Dynamics of Ceftiofur Resistance in Enterobacteriaceae from Adult Dairy Cows.

**David Sheedy**, University of Sydney

Factors characterising profitable dairy farms in Australia.

**Juan Gargiulo**, NSW DPI

Environmental enrichment preferences of cattle grazing at pasture.

**Emily Dickson**, CSIRO/UNE

### STATION 3: The Manning Valley Wagyu Dairy Beef System

**Darlene Scowen & Ben Scowen**, Dairy Farmers Manning Valley Dairy

#### Emerging Scientists

Feedlot cattle: First at feed, first in gain

**Sarah Mac**, University of Sydney

Unlocking the potential of dairy calves using data from automated calf feeders

**Sarah Legge**, The University of Sydney

The productivity of cows and calves in pasture-based extended suckling

**Sandra Ospina-Rios**, Tasmanian Institute of Agriculture (TIA), University of Tasmania

**12.30pm - 1.30pm**  
(Finish 1.30pm)

**DAIRY NEWS AUSTRALIA LUNCH,**

**EMERGING SCIENTISTS PRIZES AND SYMPOSIUM CLOSING**



# EMERGING SCIENTISTS

The Dairy Research Foundation is pleased to showcase the research and talent of Australia's emerging dairy scientists at the 2022 Symposium. Their presentations are key to Day 2 of our program and they have all been allocated to one of three platforms on the farm. Each scientist will have five minutes to deliver their presentation followed by some time for questions and discussions.

The intent behind this encounter is to offer an opportunity for professional development for these emerging scientists. The program is in the form of a competition, where we ask you, the audience, to assess the quality, relevance and interest of each presentation – with the audience scores combined to determine a winner. This is announced at the conclusion of the Farm Day. We encourage your full participation to support our next generation of dairy scientists.



*Emerging Scientists 2018*



## EMERGING SCIENTISTS 2022

[CLICK HERE FOR BIOGRAPHIES](#)

### Station 1



**Milad Bagheri Shirvan**

How are carbon dioxide and methane fluxes mediated by grazing in Kikuyu pastures?



**Francisco Segundo**

Exploring greenhouse gas mitigation strategies and carbon neutrality in dairy farms of Uruguay: A case study approach



**Zita Ritchie**

Future proofing dairy businesses against climate risk

### Station 2



**David Sheedy**

Effect of Antimicrobial Treatment on the Dynamics of Ceftiofur Resistance in Enterobacteriaceae from Adult Dairy Cows.



**Juan Gargiulo**

Factors characterising profitable dairy farms in Australia.



**Emily Dickson**

Environmental enrichment preferences of cattle grazing at pasture.

### Station 3



**Sarah Mac**

The impact of weaning on rumination, calf weight, and dry feed intake.



**Sarah Legge**

Unlocking the potential of dairy calves using data from automated calf feeders.



**Sandra Ospina-Rios**

The productivity of cows and calves in pasture-based extended suckling,



## ORGANISING COMMITTEE



**Cameron Clark**  
University of Sydney



**Dimity Smith**  
Gro Events Group



**Elizabeth Argue**  
Gro Events Group



**Emily Neilson**  
The Dairy, John's River



**Helen Golder**  
Scibus



**Kirsty Jaensch**  
University of Sydney



**Lee-Ann Monks**  
Monks Communication



**Nico Lyons**  
NSW DPI



**Peter Beale**  
Local Land Services -  
Hunter



**Sabrina Lomax**  
University of Sydney



**Simon Scowen**  
Manning Valley Dairy



**Sheena Carter**  
NSW DPI



**Yani Garcia**  
University of Sydney

# Unlocking Potential



## Venues

### Symposium Venue

#### Club Forster:

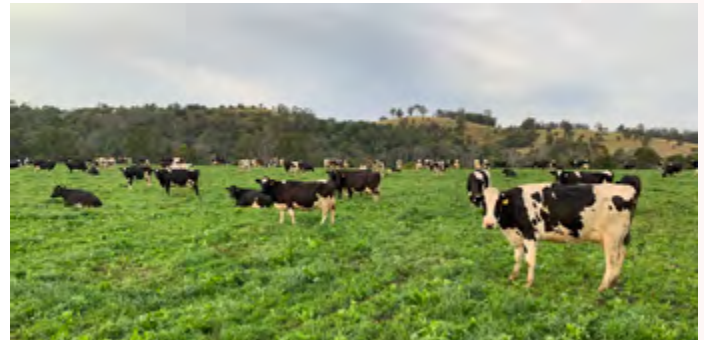
19 Strand Street, Forster NSW 2428



### Farm Day Venue

#### Manning Valley Dairy

400 Bungay Road, Wingham NSW 2429



### Symposium Dinner 6.30pm to 10.30pm – Club Forster

Enjoy dinner and drinks while mingling with the area's dairy farmers and industry leaders.

Smart Casual Theme - with a touch of black and white.

Ticket includes - three course meal, beer and wine.

Please include your dietary requirements in the ticket purchase.

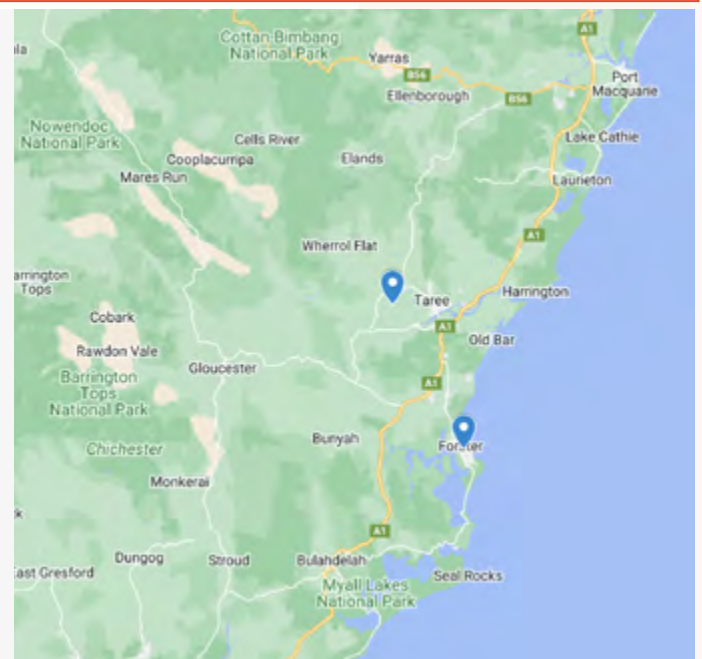
### Getting to Forster

Forster is a coastal town situated in the Mid North Coast region of New South Wales.

Forster is a 2 hour drive from Newcastle and a 3.5 hour drive North of Sydney.

### Getting to Manning Valley Dairy:

Manning Valley Dairy in Wingham is an approximately 1-hour drive from Forster. This year, we recommend attendees drive to Wingham where shuttle buses will be ready to transport you to the farm, departing at 8am to 9am from the corner of Blue Gum Avenue and Bungay Road in Wingham. Morning tea will be available; however, we recommend you have a breakfast before you depart from Forster.



### Where to stay in Forster

We can recommend the following accommodation if you're staying in Forster. Being a holiday destination there are also a lot of individual apartments on Booking.com and on AirBnB, so we recommend you look into these also.

#### The Dorsal Boutique Hotel

1 West Street, Forster T: +61 2 6554 8766

[www.dorsalhotel.com.au](http://www.dorsalhotel.com.au)

#### Forster Holiday Apartment

302/21-25 Wallis Street Forster

[www.booking.com](http://www.booking.com)

#### Astina Suites

7-9 Beach Street, Forster T: +61 2 4731 1777

[www.astinasuites.com.au](http://www.astinasuites.com.au)



## Conference Pricing

We are pleased to offer an early bird discount to those booking and paying by Friday 30 September 2022. We are also pleased to offer significant discounts to farmers and students attending.

### Early bird prices - Payment by 30 September 2022

Farmers/Students - NSW Dairy Industry Forum and Symposium Day, Farm Day and Dinner	\$370.00
Service providers - NSW Dairy Industry Forum and Symposium Day, Farm Day and Dinner	\$480.00

### Not so early bird prices - Payment after 30 September 2022

Farmers/Students - NSW Dairy Industry Forum and Symposium Day, Farm Day and Dinner	\$470.00
Service providers - NSW Dairy Industry Forum and Symposium Day, Farm Day and Dinner	\$580.00
Single day 1 ticket (NSW Dairy Industry Forum and Symposium Day OR Farm Day - not including dinner)	\$210.00
Single day 2 ticket (NSW Dairy Industry Forum and Symposium Day OR Farm Day - not including dinner)	\$160.00

### Symposium Dinner

6:30pm Tuesday 15 November 2022	\$140.00
---------------------------------	----------

**To secure your early bird pricing, payment must be received by the 30 September 2022 cut-off.**

## How can I register?

1. Scan the QR code to go to the Registration page. or
2. Go to <https://bit.ly/3PNWVjW> and click on the registration button and complete your details and payment electronically.

3.

**OR CLICK HERE**



# Unlocking Potential



The Dairy Research Foundation's 2022 Symposium is proudly supported by



'A better life for livestock, producers and consumers'



Local Land  
Services  
Hunter



Local Land  
Services  
South East



**ProviCo**  
RURAL





THE UNIVERSITY OF  
**SYDNEY**  
—  
**Institute of  
Agriculture**



[dairy-foundation.sydney.edu.au](http://dairy-foundation.sydney.edu.au)